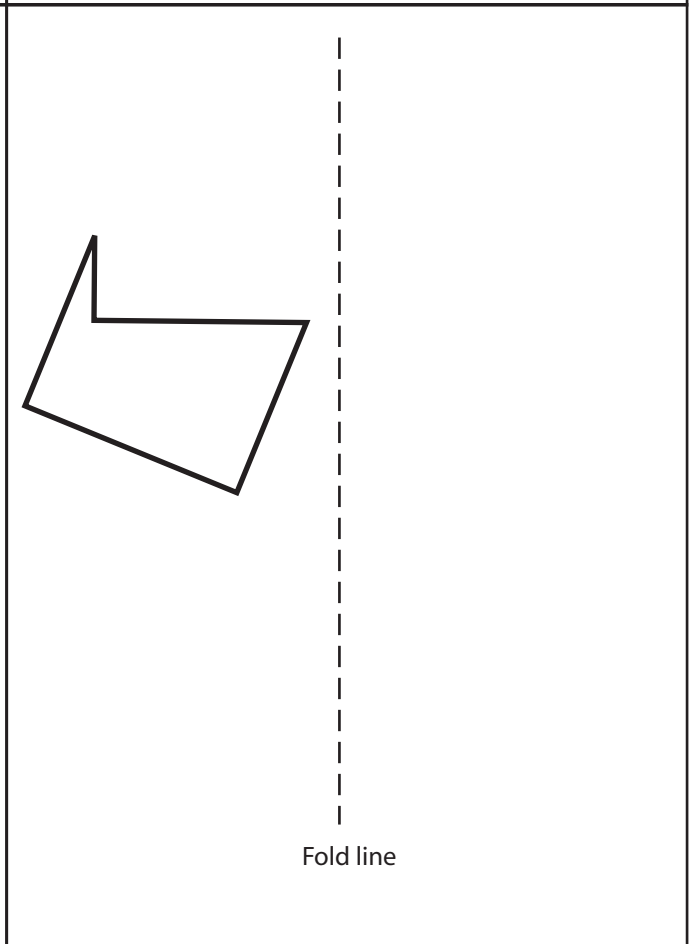
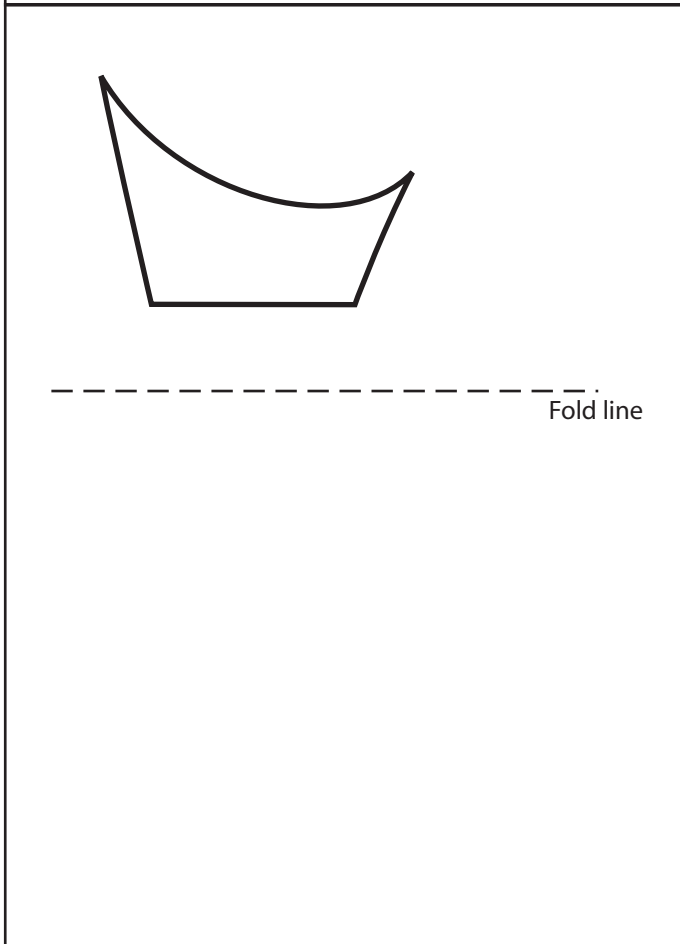
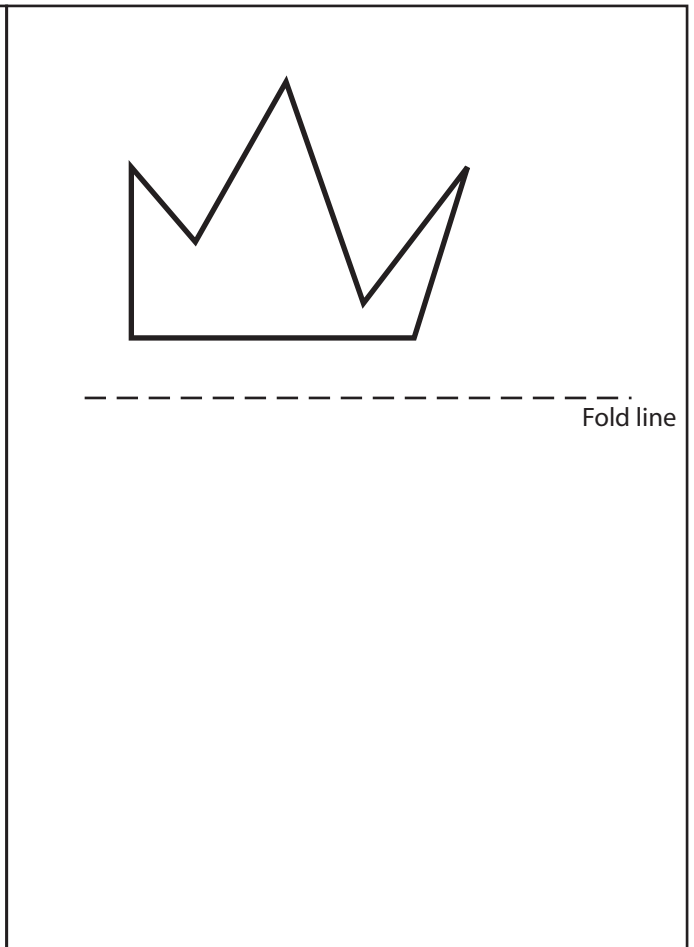
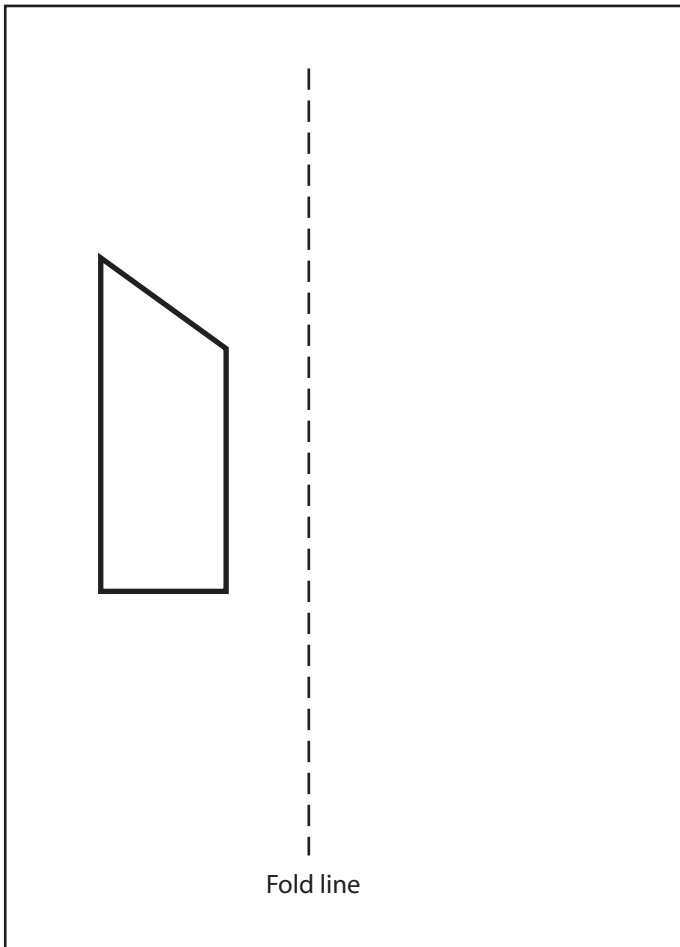
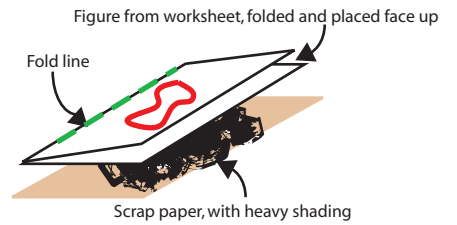
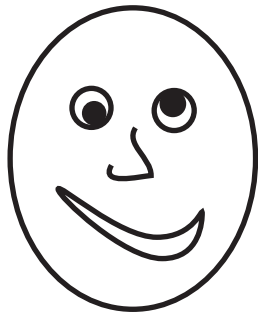
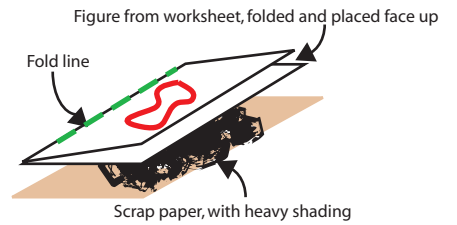


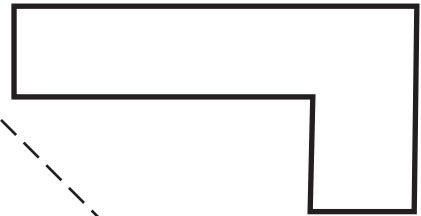
Separate the four quarters of this worksheet. For each figure, fold along the reflection line, and then place the folded paper on top of a piece of scrap paper that has been heavily shaded with a soft, dark pencil, as shown at right. Make sure the figure is face upwards, then trace the outline of the figure, pressing firmly. Unfold the paper to reveal the reflected image. Can you predict where the image will be and what it looks like?



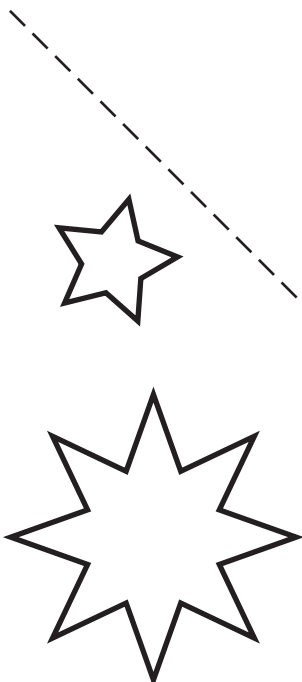
Separate the four quarters of this worksheet. For each figure, fold along the reflection line, and then place the folded paper on top of a piece of scrap paper that has been heavily shaded with a soft, dark pencil, as shown at right. Make sure the figure is face upwards, then trace the outline of the figure, pressing firmly. Unfold the paper to reveal the reflected image. Can you predict where the image will be and what it looks like?



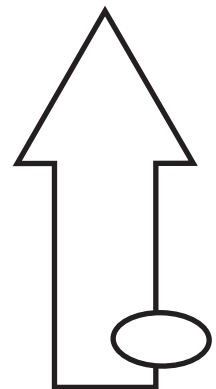
-----  
Fold line



-----  
Fold line



-----  
Fold line



-----  
Fold line