

Computers in Victorian Government Schools

February 2009

This brochure provides a ready reference for the latest statistics on computer use in government schools. It is reissued when a later set of information becomes available.

Computers in government schools – Victoria

1. Summary information*

Percentage of schools at or better than 1:5 computer to student ratio

School Sector	2008	2009	Change
Primary	94.0%	95.3%	1.3%
Secondary	90.3%	89.9%	-0.4%
Total	93.3%	94.2%	0.9%

School numbers

School Sector	2008	2009	Change
Number of schools (Primary)	1,277	1,260	-1.3%
Number of schools (Secondary)	309	327	5.8%
Total number of schools	1,586	1,587	0.1%
Number at 1:5 or better (Primary)	1,200	1,201	0.1%
Number at 1:5 or better (Secondary)	279	294	5.4%
Total at 1:5 or better	1,479	1,495	1.1%

Computer quantity by type

Computer Type	2008	2009	Change
Administration	16,469	17,936	8.9%
Curriculum	156,857	174,179	11.0%
Teacher and Principal Notebooks	40,690	40,690	0.0%
Total computers*	214,016	232,805	8.8%

Average number of students per computer

School Sector	2008	2009	Change
Primary	3.37	3.05	-9.5%
Secondary	3.51	3.16	-10.0%
Statewide Average	3.43	3.10	9.6%

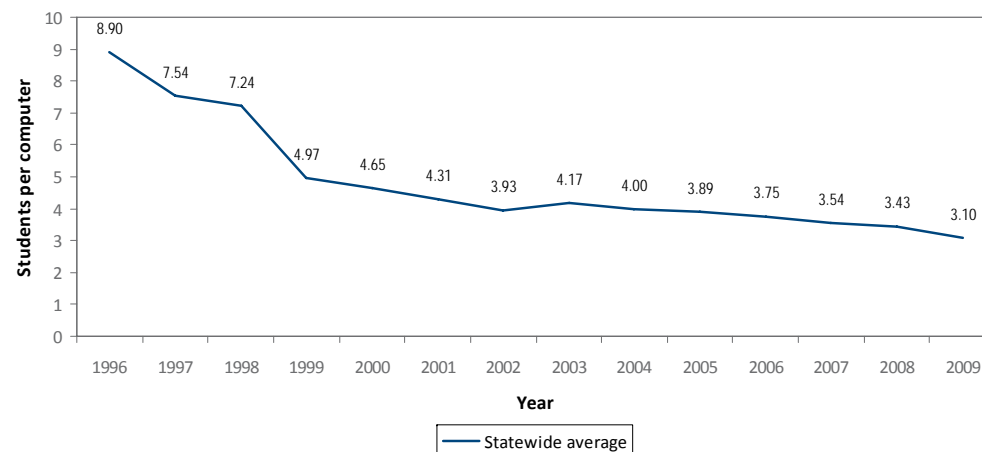
Source: DEECD February 2008 and 2009 Census of Computers in Schools

* Computer totals exclude computers located in camps.

Computer Historical comparisons – Victorian Government Schools

2. Average computer to student ratio

Average number of students per computer statewide



Source: 2000–09 February Census of Computers in Schools

3. Average number of students per computer by school type and region

Region	Year	Primary	Sec.	Pri/Sec	Special	Lang.	Average
Barwon South Western	2009	2.16	3.12	2.60	2.54		2.51
	2000	4.44	4.38	3.57	3.12		4.32
Hume (Goulburn North East)	2009	2.57	2.71	2.24	2.05		2.59
	2000	4.48	3.94	4.39	2.68		4.23
Loddon Mallee (Loddon Campaspe Mallee)	2009	2.58	2.95	2.22	2.45		2.64
	2000	4.53	4.06	3.13	3.70		4.19
Grampians (Central Highlands Wimmera)	2009	2.52	3.18	2.11	3.45		2.70
	2000	4.81	3.80	2.89	3.02		4.20
Gippsland	2009	2.92	2.97	1.46	1.81		2.89
	2000	4.61	4.42	3.73	2.06		4.45
Eastern Metropolitan	2009	3.38	2.87	3.86	2.19	3.13	3.13
	2000	5.28	4.47	5.79	2.69		4.87
Northern Metropolitan	2009	3.23	3.51	3.09	1.95	2.37	3.28
	2000	5.09	4.13	3.62	2.09		4.54
Southern Metropolitan	2009	3.47	3.65	3.49	2.29	2.75	3.50
	2000	5.56	4.42	5.27	2.77		5.00
Western Metropolitan	2009	3.69	3.56	3.88	1.97	1.98	3.60
	2000	5.46	4.54	6.24	3.03		5.00
Total	2009	3.10	3.21	2.92	2.17	2.55	3.10
	2000	5.06	4.30	3.83	2.66		4.65

Source: enrolments – February school census; computers – Departmental February 2000 and 2009 census of computers in schools

4. Age of computers by school type

School Type	0 - 1	1 - 2	2 - 3	3 - 4	4 - 5	5 - 6	6 - 7	> 7	Total
Primary	23,924	18,508	15,313	12,646	7,927	5,231	7,750	3,053	94,352
Secondary	18,319	13,564	13,532	9,042	4,320	2,566	1,523	817	63,683
Pri/Sec	3,876	2,601	2,071	1,432	712	413	286	128	11,519
Special	1,346	854	799	466	288	183	212	84	4,232
Language	167	64	59	41	29	24	6	3	393
Total	47,632	35,591	31,774	23,627	13,276	8,417	9,777	4,085	174,179

Source: DEECD February 2009 census of computers in schools

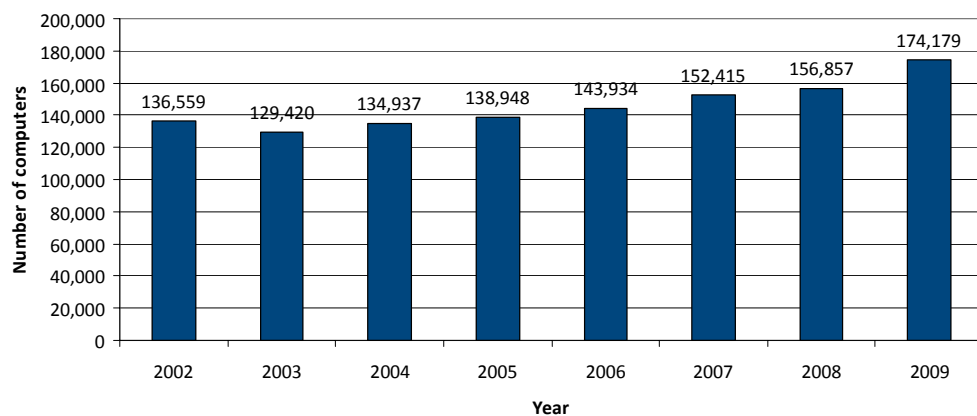
5. Average number of students per computer by school type

School type	1996	1999	2000	2001	2002	2003	2004	2005	2006	2007	2008	2009
Primary	11.12	5.46	5.06	4.61	4.08	4.26	4.10	3.94	3.80	3.60	3.41	3.10
Secondary	7.01	4.54	4.30	4.19	3.86	4.23	4.04	3.94	3.76	3.56	3.55	3.21
Pri/Sec	6.84	4.09	3.83	3.83	3.51	3.38	3.35	3.49	3.54	3.19	3.29	2.92
Special	4.79	2.86	2.66	2.19	2.31	2.54	2.51	2.44	2.51	2.32	2.43	2.17
Overall	8.90	4.97	4.65	4.31	3.93	4.17	4.00	3.89	3.75	3.54	3.43	3.10

Source: DoE July 1996 computer / technology hardware survey, DEET Sept 1999 computer survey, 2000-2009 Departmental February Census of Computers in Schools

6. Increase in computer numbers

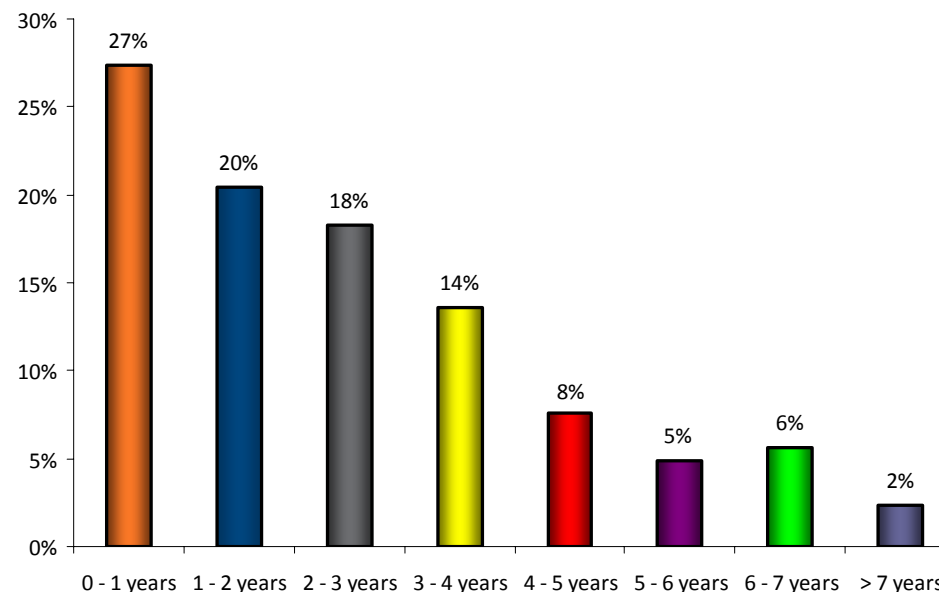
Curriculum Computers



Source: 2002-09 February Census of Computers in Schools

7. Age of computers

Curriculum Computers by Age



Source: DEECD February 2009 census of computers in schools

8. Age (years) of computers by region (percent)

Region	Year	0 - 1	1 - 2	2 - 3	3 - 4	4 - 5	5 - 6	6 - 7	7 +
Barwon South Western	2009	31%	20%	17%	11%	9%	3%	5%	3%
	2000		67%		15%		9%		9%
Eastern Metropolitan	2009	28%	21%	17%	14%	8%	5%	5%	2%
	2000		65%		17%		8%		10%
Gippsland	2009	23%	20%	24%	12%	9%	5%	5%	2%
	2000		59%		20%		9%		11%
Grampians (Central Highlands)	2009	28%	22%	17%	13%	6%	5%	6%	4%
	2000		56%		25%		9%		9%
Hume (Goulburn North)	2009	28%	19%	18%	12%	10%	5%	6%	3%
	2000		71%		16%		7%		6%
Loddon Mallee (Loddon Campaspe)	2009	28%	19%	16%	14%	9%	5%	6%	3%
	2000		63%		16%		9%		12%
Northern Metropolitan	2009	25%	19%	19%	14%	8%	5%	6%	3%
	2000		61%		19%		10%		11%
Southern Metropolitan	2009	26%	23%	18%	14%	7%	5%	6%	2%
	2000		62%		20%		7%		10%
Western Metropolitan	2009	30%	19%	19%	15%	5%	5%	6%	2%
	2000		64%		19%		8%		9%
Total	2009	27%	20%	18%	14%	8%	5%	6%	2%
	2000		63%		18%		8%		10%

Source: 2000 and 2009 Departmental February census of computers in schools